

# INDUSTRIAL PUMP PACKAGE

Pump and Valve Systems

## PRODUCT APPLICATIONS

- Freshwater supply
- Wastewater
- Chemical dosing/delivery
- Aeration
- Sludge transfer
- Dewatering



## PRODUCT OVERVIEW

Streamline procurement and improve water system performance with Ludell pump and valve packages. Our built-to-order packages are engineered to your specific needs for replacement or a new system to enhance flow control and reduce energy consumption. We assemble every package in-house with ASME-certified welding and precise assembly to save you on-site installation time, hassle and costs. We've simplified integration with your system, too. Choose Ludell for peak efficiency and long-term reliability in your water pumping solution.



## PRODUCT FEATURES

- Packages include pump(s), motor(s), base plate, piping, and isolation/check valves.
- Pump selection focuses on low maintenance, cost savings, and durability.
- Materials chosen based on water chemistry, environment, and temperature.
- Proven quality with Ludell's ASME Code Stamp no. 18439.
- Optional electrical disconnect compatible with lockout/tagout (LOTO)

### Available Types:

- |                          |                       |
|--------------------------|-----------------------|
| • Submersible            | • Peristaltic         |
| • Dry-pit                | • Enclosed channel    |
| • Self-priming           | • Semi-open impellers |
| • Centrifugal            | • Vortex impellers    |
| • Progressive cavity     | • Multi-stage         |
| • Air operated diaphragm |                       |



For more information visit our website: [ellisludell.com](http://ellisludell.com)

## INDUSTRIES

- Industrial Laundry
- Food and Beverage Processing
- Water Treatment
- Pet Food Production
- Pharmaceutical Manufacturing
- Concrete and Ready-Mix Production

## BENEFITS WITH A LUDELL PUMP PACKAGE

### Small Footprint

Designed with a compact footprint, allowing for efficient use of space without sacrificing performance, making it ideal for facilities with limited installation areas.

### Reduced Maintenance Cost and Downtime

Manual isolation and bypass valves around automatic control valves and water delivery pumps enable faster, easier maintenance.



### Simplified, Seamless Installation

An easy-to-assemble design that reduces installation time and cost, ensuring seamless integration into your system.

### Extended Life

Built for extended life with corrosion-resistant piping, flanges, and fittings, ensuring durability in demanding environments.

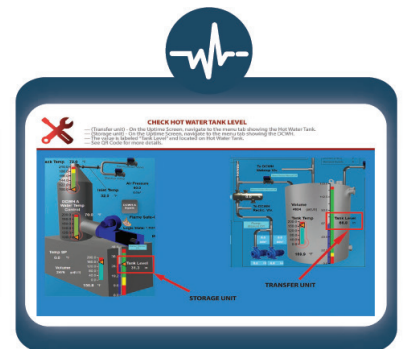
**Uptime® enhances the performance and reliability of ALL Ludell equipment integrated into larger systems.**



## More Than Data, Diagnostics & Alerts

Uptime® goes beyond diagnostics. Uptime provides pinpoint location of problems and on-demand step-by-step video support for quick fixes right on the production floor.

- **Maintenance Video Library:** Scanning QR codes provides step-by-step video tutorials for maintenance, enabling quick access to troubleshooting and repair guidance on the production floor.
- **Bridging the Knowledge Gap:** Captures and preserves essential knowledge through standardized training and on-demand resources, addressing workforce challenges like retiring employees and skill transfer.
- **Real-Time Monitoring and Alerts:** Enables continuous oversight of equipment performance, minimizing unexpected downtime.
- **Preventative Maintenance:** Supports proactive machine health assessments to prevent issues before they occur, extending equipment lifespan.
- **Remote Accessibility:** With client authorization, Ellis or Ludell securely analyzes and troubleshoots systems remotely, ensuring efficient support from any location.
- **Automated Data Collection, Insights and Reporting:** Collects and analyzes operational data to optimize machine efficiency while facilitating the transfer and analysis of key metrics, such as water and energy usage, to support informed decision-making and conservation efforts.



## CONTACT US - LUDELL

**Phone:** 414-476-9934

**Address:** 5200 W. State St.  
Milwaukee, WI 53208

**Website:** [ellisludell.com](http://ellisludell.com)