

INDUSTRIAL PUMP PACKAGE

Pump and Valve Systems

PRODUCT APPLICATIONS

- Freshwater supply
- Wastewater
- Chemical dosing/delivery
- Aeration
- Sludge transfer
- Dewatering

PRODUCT OVERVIEW

Streamline procurement and improve water system performance with Ludell pump and valve packages. Our built-to-order packages are engineered to your specific needs for replacement or a new system to enhance flow control and reduce energy consumption. We assemble every package in-house with ASME-certified welding and precise assembly to save you on-site installation time, hassle and costs. We've simplified integration with your system, too. Choose EllisLudell for peak efficiency and long-term reliability in your water pumping solution.

PRODUCT FEATURES

- Packages include pump(s), motor(s), base plate, piping, and isolation/check valves.
- Pump selection focuses on low maintenance, cost savings, and durability.
- Materials chosen based on water chemistry, environment, and temperature.
- Proven quality with our ASME Code Stamp no. 18439.
- Optional electrical disconnect compatible with lockout/tagout (LOTO)

Available Types:

- | | |
|--------------------------|-----------------------|
| • Submersible | • Peristaltic |
| • Dry-pit | • Enclosed channel |
| • Self-priming | • Semi-open impellers |
| • Centrifugal | • Vortex impellers |
| • Progressive cavity | • Multi-stage |
| • Air operated diaphragm | |



Triplex System

For more information visit our website: ellisludell.com

INDUSTRIES

- Industrial Laundry
- Food and Beverage Processing
- Water Treatment
- Pet Food Production
- Pharmaceutical Manufacturing
- Concrete and Ready-Mix Production

BENEFITS WITH AN ELLISLUDELL PUMP

Small Footprint

Designed with a compact footprint, allowing for efficient use of space without sacrificing performance, making it ideal for facilities with limited installation areas.

Reduced Maintenance Cost and Downtime

Manual isolation and bypass valves around automatic control valves and water delivery pumps enable faster, easier maintenance.



Duplex System

Simplified, Seamless Installation

An easy-to-assemble design that reduces installation time and cost, ensuring seamless integration into your system.

Extended Life

Built for extended life with corrosion-resistant piping, flanges, and fittings, ensuring durability in demanding environments.

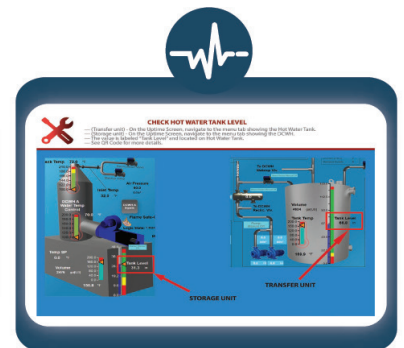
Uptime® enhances the performance and reliability of ALL EllisLudell equipment integrated into larger systems.



More Than Data, Diagnostics & Alerts

Uptime® goes beyond diagnostics. Uptime provides pinpoint location of problems and on-demand step-by-step video support for quick fixes right on the production floor.

- **Maintenance Video Library:** Scanning QR codes provides step-by-step video tutorials for maintenance, enabling quick access to troubleshooting and repair guidance on the production floor.
- **Bridging the Knowledge Gap:** Captures and preserves essential knowledge through standardized training and on-demand resources, addressing workforce challenges like retiring employees and skill transfer.
- **Real-Time Monitoring and Alerts:** Enables continuous oversight of equipment performance, minimizing unexpected downtime.
- **Preventative Maintenance:** Supports proactive machine health assessments to prevent issues before they occur, extending equipment lifespan.



- **Remote Accessibility:** With client authorization, Ellis or Ludell securely analyzes and troubleshoots systems remotely, ensuring efficient support from any location.
- **Automated Data Collection, Insights and Reporting:** Collects and analyzes operational data to optimize machine efficiency while facilitating the transfer and analysis of key metrics, such as water and energy usage, to support informed decision-making and conservation efforts.



CONTACT US - LUDELL

Phone: 414-476-9934

Address: 5200 W. State St.
Milwaukee, WI 53208

Website: ellisludell.com